

A decorative graphic element consisting of a dark gray triangle pointing downwards, partially overlapping a lighter gray triangle pointing upwards.

Owner's Manual

Original Instructions

RF Remote Controller LE60-13/C1

Thank you for choosing this product. Please read this Owner's Manual carefully before operation and retain it for future reference.

If you have lost the Owner's Manual, please contact the local agent or visit www.gree.com or send an email to global@cn.gree.com for the electronic version.

GREE ELECTRIC APPLIANCES, INC. OF ZHUHAI

A large, abstract graphic in the bottom right corner, featuring a dark gray triangle pointing upwards, partially overlapping a lighter gray triangle pointing downwards. Below these triangles is a detailed, grayscale image of a complex mechanical or electrical structure, possibly a circuit board or a component of a machine, with various wires and components visible.

To Users

Thank you for selecting Gree product. Please read this instruction manual carefully before installing and using the product, so as to master and correctly use the product. In order to guide you to correctly install and use our product and achieve expected operating effect, we hereby instruct as below:

- (1) This appliance is not intended for use by persons (including children) with reduced physical, sensory or mental capabilities, or lack of experience and knowledge, unless they have been given supervision or instruction concerning use of the appliance by a person responsible for their safety. Children should be supervised to ensure that they do not play with the appliance.
- (2) This instruction manual is a universal one. Some functions are only applicable to particular product. All the illustrations and information in the instruction manual are only for reference, and control interface should be subject to actual operation.
- (3) All the illustrations and information in the instruction manual are only for reference. In order to make the product better, we will continuously conduct improvement and innovation. If there is adjustment in the product, please subject to actual product.
- (4) If the product needs to be installed, moved or maintained, please contact our designated dealer or local service center for professional support.

Users should not disassemble or maintain the unit by themselves, otherwise it may cause relative damage, and our company will bear no responsibilities.

Contents

1 Safety Notices (Please be sure to abide)	1
2 Installation	2
2.1 Dimension and Component of RF Remote Controller.....	2
2.2 Installing Position and Requirements of RF Remote Controller	4
2.3 Installation of RF Remote Controller	4
3 Display Introduction	8
3.1 RF Remote Controller Appearance	8
4 Operation Instructions	9
4.1 Matching Setting	9
4.2 Air Valve Setting	9
4.3 Replacement of Battery in RF Remote Controller.....	10

1 Safety Notices (Please be sure to abide)



WARNING: If not abide them strictly, it may cause severe damage to the unit or the people.



NOTE: If not abide them strictly, it may cause slight or medium damage to the unit or the people.



This sign indicates that the operation must be prohibited. Improper operation may cause severe damage or death to people.



This sign indicates that the items must be observed. Improper operation may cause damage to people or property.



WARNING!

This product can't be installed at corrosive, inflammable or explosive environment or the place with special requirements, such as kitchen. Otherwise, it will affect the normal operation or shorten the service life of the unit, or even cause fire hazard or serious injury. As for above special places, please adopt special air conditioner with anti-corrosive or anti-explosion function.

2 Installation

2.1 Dimension and Component of RF Remote Controller

(Unit: mm)

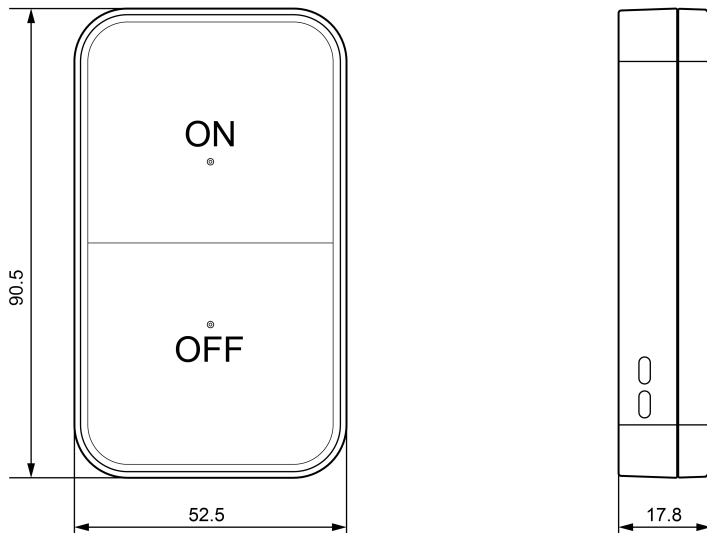


Figure 2-1 Dimension of RF Remote Controller

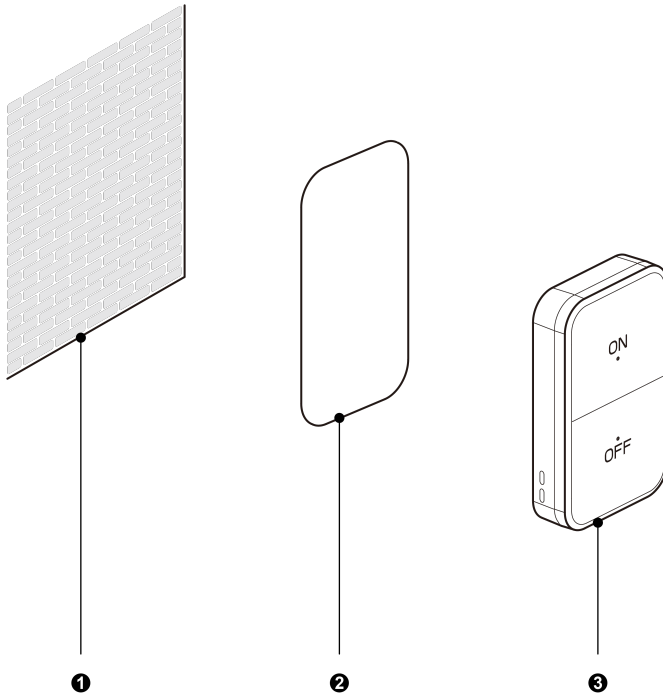


Figure 2-2 Components of RF Remote Controller

Table 2.1.1 Introduction of Components

No.	①	②	③
Name	wall	3M tape	RF remote controller
Quantity	/	1	1

2.2 Installing Position and Requirements of RF Remote Controller

- (1) Please do not install the RF remote controller in the position where is wet or is likely to be splashed with water;
- (2) Please do not install the RF remote controller near high-temperature objects or under direct sunlight;
- (3) The RF remote controller should only be installed indoors, and its working temperature range is 0°C ~ 50°C.

2.3 Installation of RF Remote Controller

Fix it by 3M tape on the wall as shown by the figure as below. The brief instruction is as below:

- (1) Do not install the button battery before installation;
- (2) Use a tool to gently open the clasp, and then remove the RF remote controller in the direction of the arrow;
- (3) Use tools to conduct the DIP switch code for RF remote controller according to room number. Please refer to the schematic diagram of DIP switch code of RF remote controller for the detailed method;

- (4) Install the button battery at the battery holder. Please note that the positive and negative poles should be connected correctly;
- (5) Buckle RF remote controller and the base together;
- (6) Tear off one side of 3M tape and then stick it at the back of RF remote controller correctly; tear off the other side of 3M tape and then stick the mounting plate on the wall, and then the installation is finished.

The black part is the rod, when the rod is close to ON, it's ON, and the opposite direction is OFF.

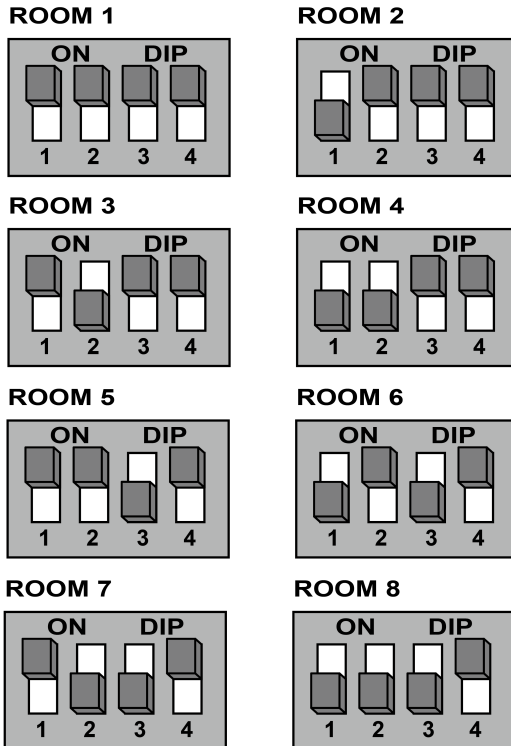


Figure 2-3 Schematic Diagram of DIP Switch Code of RF Remote Controller

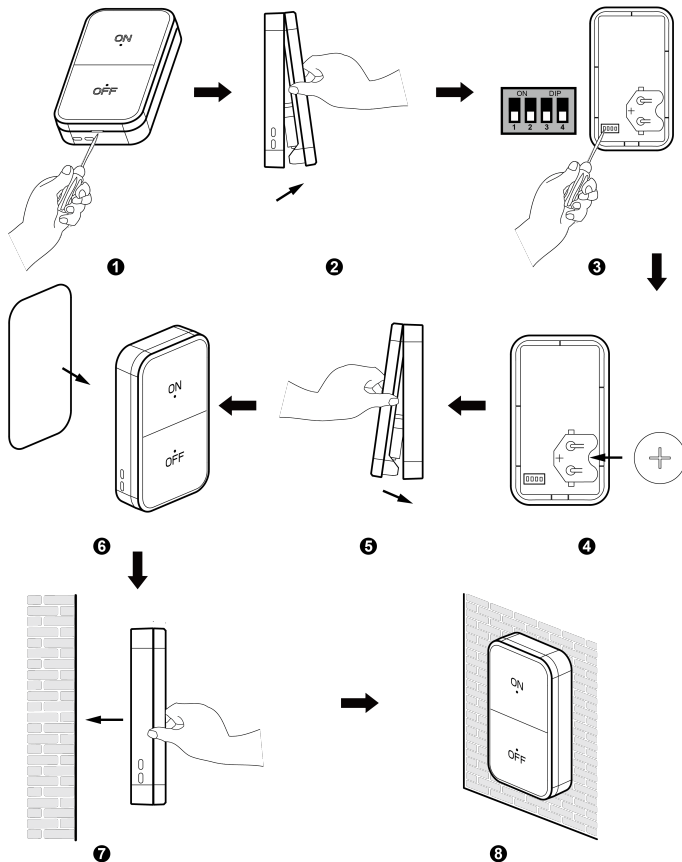


Figure 2-4 Sketch Map for Installation of RF Remote Controller

3 Display Introduction

3.1 RF Remote Controller Appearance

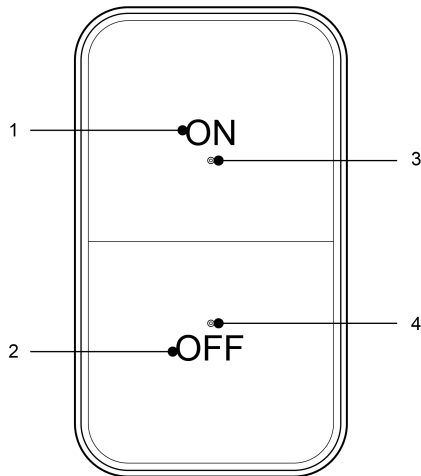


Figure 3-1 RF Remote Controller Appearance

Table 3.1.1 RF Remote Controller Appearance Instruction

No.	Name	Instruction
1	"ON" button	The air valve at the current area is allowed to be open
2	"OFF" button	Close the air valve at the current area
3	Green indicator	RF remote controller status indicator
4	Red indicator	

4 Operation Instructions

4.1 Matching Setting

When using RF remote controller for the first time, please conduct the matching with the zone control system. Matching method: turn on match mode of wired remote controller and press “ON” and “OFF” buttons at the same time for 5s; when green indicator and red indicator are on and off alternatively, it indicates RF remote controller has entered into the match mode.

When entering into match mode, if matching is not succeeded within 5min, the red indicator will flash quickly for 10s and then exit from the match mode. If matching is succeeded, the green indicator will flash quickly for 10s and then exit from the match mode.

Table 4.1.1 RF Remote Controller Match Status

Match status	Indicator status
Matching	green indicator and red indicator are on and off alternatively
Match successful	green indicator will flash quickly
Match failed	red indicator will flash quickly

4.2 Air Valve Setting

RF remote controller can open or close the air valve at current area. Press “ON” button and then the green indicator will flash once and the air valve at current area will open; press “OFF” button and then the red indicator will flash once and the air valve at current area will close.

! **NOTE!**

When operating the RF remote controller, make sure it is within the receiving range of the zone control interface.

4.3 Replacement of Battery in RF Remote Controller

- (1) Use a tool to gently open the clasp, and then remove the RF remote controller in the direction of the arrow;
- (2) Take out old battery;
- (3) Install the button battery (CR2450) at the battery holder. Please note that the positive and negative poles should be connected correctly;
- (4) Buckle RF remote controller and the base together.

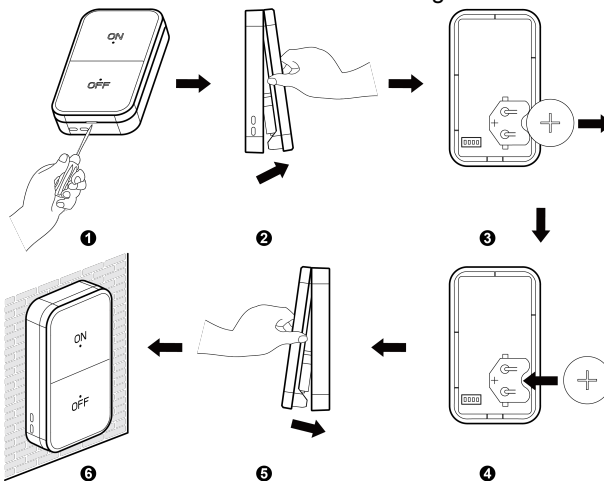


Figure 4-1 Replacement of battery in RF remote controller



NOTES!

- (1) Do not use the wrong type of battery when replacing the battery, otherwise the RF remote controller may be damaged;
- (2) If the RF remote controller does not work properly, please remove the battery and reinstall it after 10s. If it still does not work normally, please replace the battery.



WARNING!

Do not ingest the battery, Chemical Burn Hazard.

(The remote control supplied with) This product contains a coin/button cell battery. If the coin/button cell battery is swallowed, it can cause severe internal burns in just 2 hours and can lead to death.

Keep new and used batteries away from children.

If the battery compartment does not close securely, stop using the product and keep it away from children.

If you think batteries might have been swallowed or placed inside any part of the body, seek immediate medical attention.



GREE ELECTRIC APPLIANCES, INC. OF ZHUHAI

Add: West Jinji Rd, Qianshan, Zhuhai, Guangdong, China, 519070

Tel: (+86-756) 8522218

Fax: (+86-756) 8669426

E-mail: global@cn.gree.com www.gree.com



600005062100